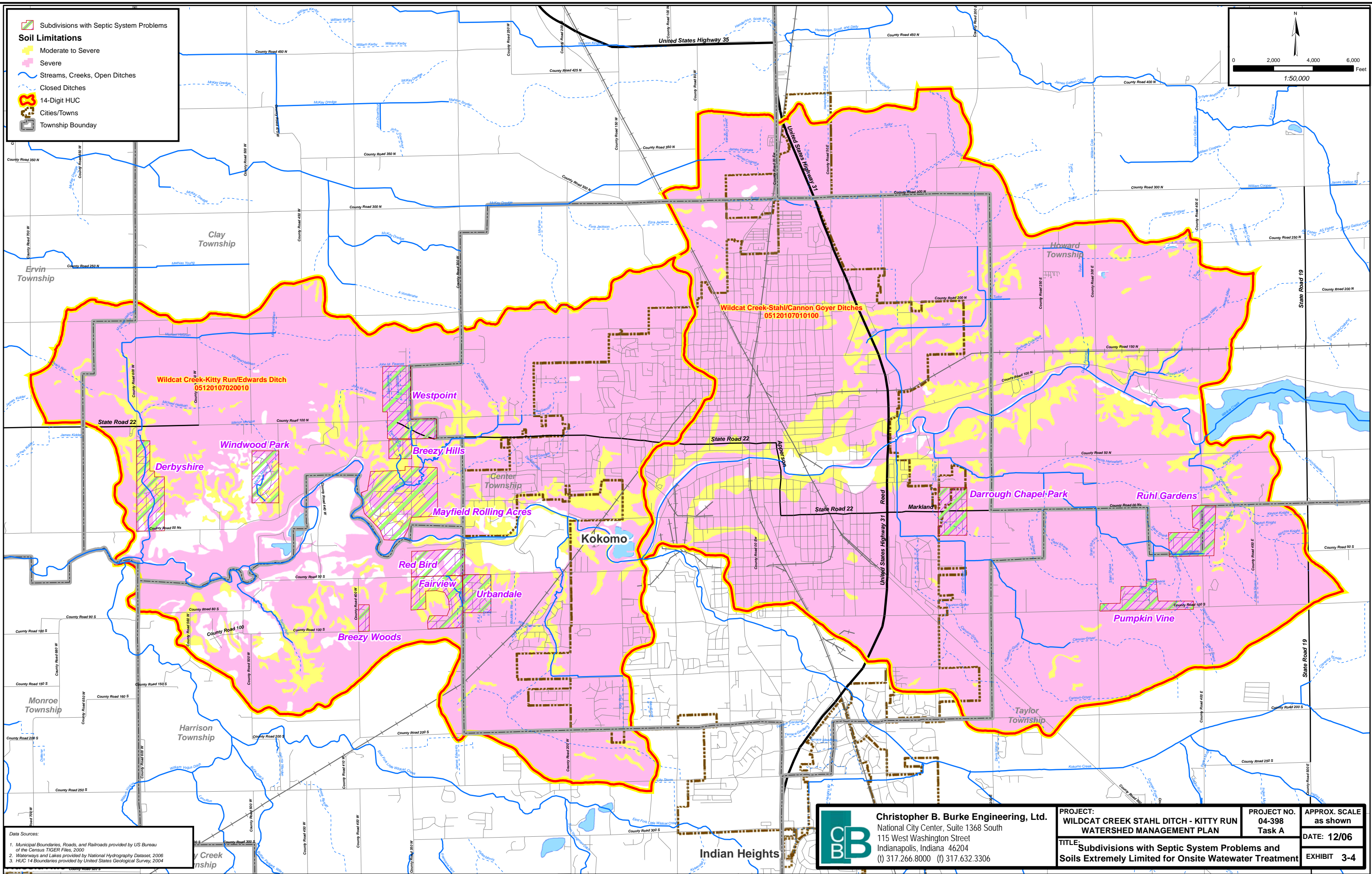
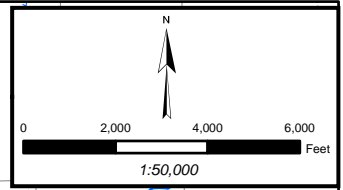


Subdivisions with Septic System Problems

**Soil Limitations**

- Moderate to Severe
- Severe
- Streams, Creeks, Open Ditches
- Closed Ditches
- 14-Digit HUC
- Cities/Towns
- Township Boundary



Data Sources:

- Municipal Boundaries, Roads, and Railroads provided by US Bureau of the Census TIGER Files, 2000
- Waterways and Lakes provided by National Hydrography Dataset, 2006
- HUC 14 Boundaries provided by United States Geological Survey, 2004

**Christopher B. Burke Engineering, Ltd.**  
 National City Center, Suite 1368 South  
 115 West Washington Street  
 Indianapolis, Indiana 46204  
 (t) 317.266.8000 (f) 317.632.3306

PROJECT: <b>WILDCAT CREEK STAHL DITCH - KITTY RUN WATERSHED MANAGEMENT PLAN</b>	PROJECT NO. <b>04-398 Task A</b>	APPROX. SCALE as shown
TITLE: <b>Subdivisions with Septic System Problems and Soils Extremely Limited for Onsite Wastewater Treatment</b>		DATE: 12/06
		EXHIBIT 3-4