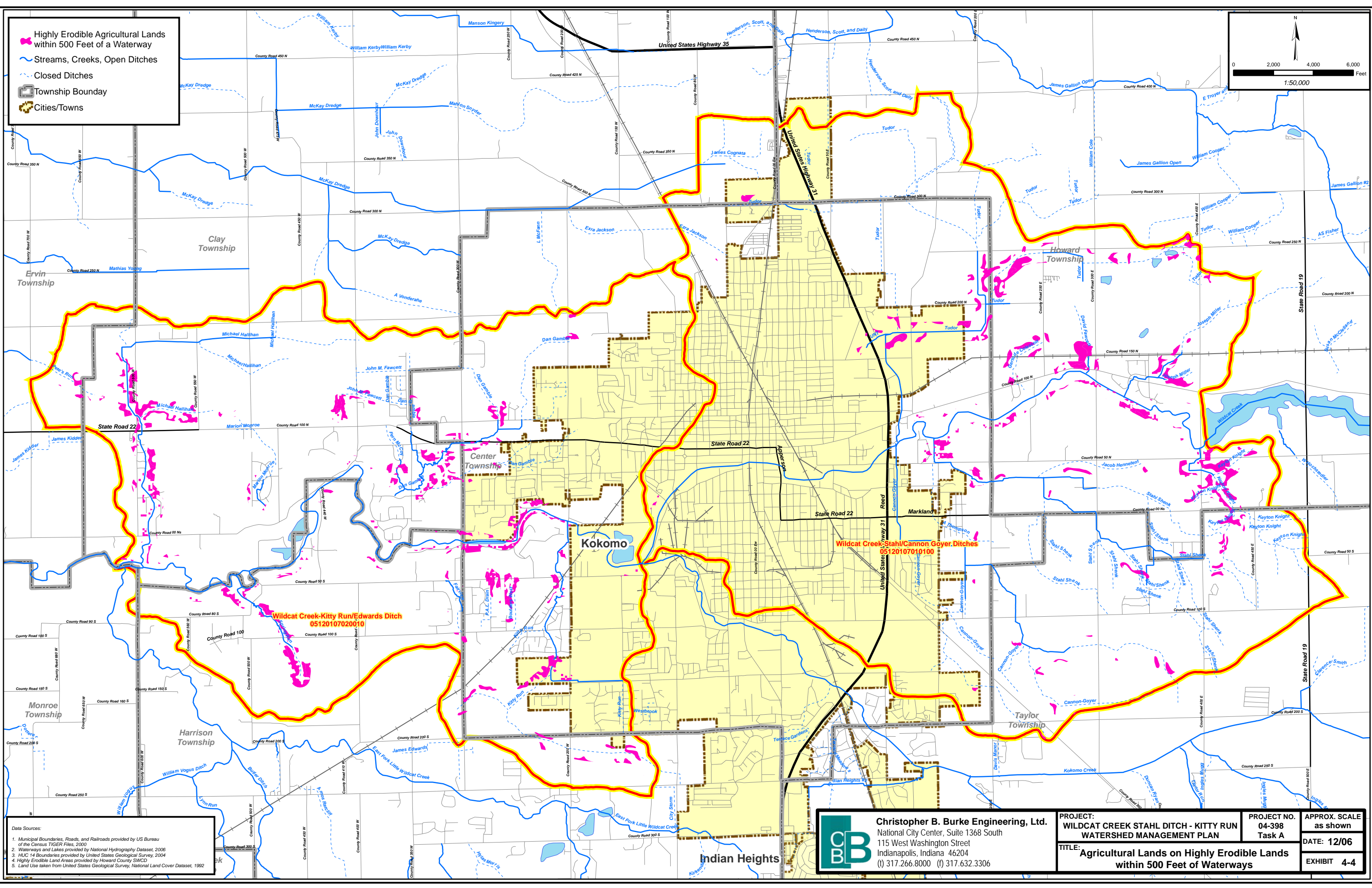
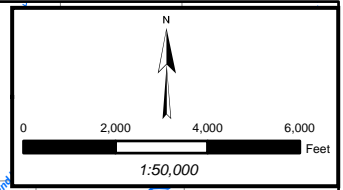


Highly Erodible Agricultural Lands within 500 Feet of a Waterway  
 Streams, Creeks, Open Ditches  
 Closed Ditches  
 Township Boundary  
 Cities/Towns



Data Sources:  
 1. Municipal Boundaries, Roads, and Railroads provided by US Bureau of the Census TIGER Files, 2000  
 2. Waterways and Lakes provided by National Hydrography Dataset, 2006  
 3. HUC 14 Boundaries provided by United States Geological Survey, 2004  
 4. Highly Erodible Land Areas provided by Howard County SWCD  
 5. Land Use taken from United States Geological Survey, National Land Cover Dataset, 1992

**Christopher B. Burke Engineering, Ltd.**  
 National City Center, Suite 1368 South  
 115 West Washington Street  
 Indianapolis, Indiana 46204  
 (t) 317.266.8000 (f) 317.632.3306

<b>PROJECT:</b> WILDCAT CREEK STAHL DITCH - KITTY RUN WATERSHED MANAGEMENT PLAN	<b>PROJECT NO.</b> 04-398 Task A	<b>APPROX. SCALE</b> as shown
<b>TITLE:</b> Agricultural Lands on Highly Erodible Lands within 500 Feet of Waterways		<b>DATE:</b> 12/06 <b>EXHIBIT</b> 4-4